

## Products Features

- ▶ Using special optical materials.
- ▶ Many patterns for choosing. (lattice, line, dot etc.)
- ▶ High uniformity and shadowless.
- ▶ Emitting light can be coaxial with camera.
- ▶ Having the merits of Coaxial and Shadowless Lights.

## Customization

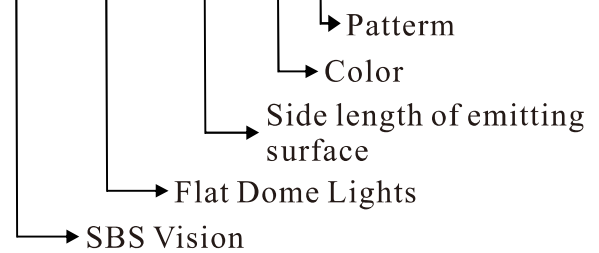
- Pattern
- Color
- Connector
- Cable length
- Power
- Mounting
- Dimensions

## Applications the light be used for

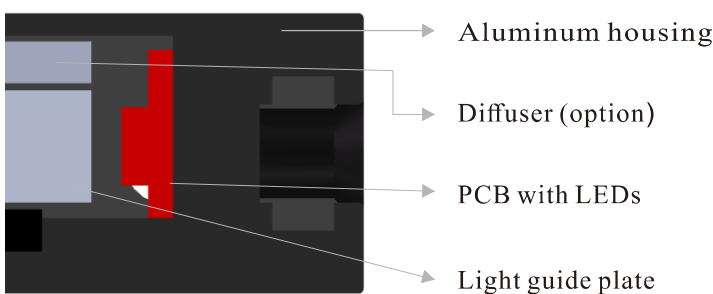
- Defects inspection of a little reflective metal.
- Characters inspection of arc surface.
- Pin inspection of electronic components.
- Surface inspection of packing bag and film.

## Model Description

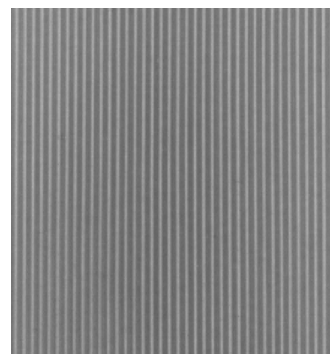
SBS-FDL-XXX-X-X



## Structure



## Line Pattern



## Parameter

Item	Model	Power consumption Red Color	Power consumption (W,B,G)	Option	Extension cable	Recommended Controller
1	SBS-FDL50	24V/0.9W	24V/1.5W	Diffuser	1m/3m/5m	SBS-AC24XX-X (Analog controller)
2	SBS-FDL100	24V/1.8W	24V/2.8W	Diffuser	1m/3m/5m	SBS-DC24XX-X (Digital controller)
3	SBS-FDL150	24V/2.7W	24V/4.3W	Diffuser	1m/3m/5m	SBS-ODC48XX-X (Strobe controller)

## Dimensions(mm)

